



Map of Tahara City

Adminstrative and welfare facilities



Tahara City Hall [J-3] B



Atsumi Branch Office [D-5]



Akabane Citizens' Center [H-5]



Tahara Welfare Center [J-4] B



Tahara Children's [J-3] Welfare Center



Parent-child Exchange Hall "Sukutto" [J-3] B

- Atsumi Life Land [D-5]
- Akabane Welfare Center [H-5]
- Tahara Funeral Hall [I-3]
- Tahara Fire Station [J-3]
- Tahara Station South Public Parking [J-4] B
- Furusato Education Center [H-4]
- Tahara Child Development Support Center [I-4]
- Tahara Child Development Support Center Branch [I-5]

Cultural and historical facilities



Tahara Public Library [J-3] B



Tahara Cultural Park [J-3] B



Tahara Municipal [J-3] Museum



Tahara Castle Ruins [J-3] B

- Atsumi Cultural Hall [D-5]
- Atsumi History Museum [D-5]
- Atsumi Sports Park [D-6]
- Akabane Cultural Hall [H-5]
- Akabane Cultural Park [H-5]
- Ikenohara Park-Ikenohara Hall [J-3] B

Sightseeing attractions, resorts and historical sites



Irago Misaki Lighthouse [A-6] A



Sante Parc Tahara [H-4] (Agricultural Park)



Mt. Zao Observatory [J-3]



Tahara Ruins [J-3] B



Shiroya Beach Park [I-3] (Shiroya Beach)



Yoshigo Shell Mound [K-3] Historic Park (Shellima Yoshigo)

- Koijigahama Beach [A-6] A
- Bell of Happiness [A-6] A
- Monument of the Manyo Poem [A-6] A
- Hiinosekimon [A-6] A
- "Coconut" Monument [A-6] A
- Monument of the Old Post Basho [A-6] A
- Irago Cristalporite Road Station [A-6] A
- Irago Todajji Tile Kiln Ruins [B-6]
- Hattachiike Park [B-6]
- Sarayaki Koyokan [D-5]
- Atsumi no Mori Park [D-6]
- Hobi Shell Mound [D-5]
- Autogenesis ground of shidekobushi (Magnolia Kobus) at Nagusa [E-5]
- Ikawazu Shell Mound [F-4]
- Ikawazu Magnolia Kobus [F-5]
- Hikariwa [G-5]
- Akabane Loco-station [G-6] Road Station

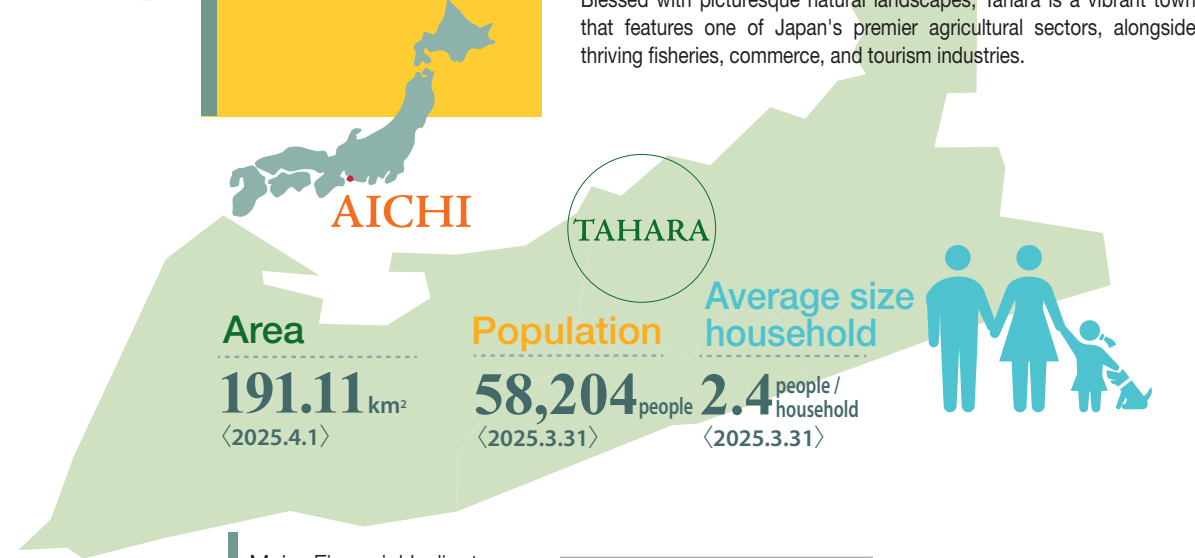
- Nisaki Campground [H-3]
- Takigashira Park [I-3]
- Kurogawa Swamp Botanical Gardens [I-4]
- Midorigahama No. 2 Green Belt (Eco Park) [J-1]
- Toshichibara Swamp Botanical Gardens [J-3]
- Tahara Festival Hall [J-3] B
- Tahara Mekkun [J-4] House Road Station
- Yanokuchi Park [K-5] (Omotehama Hoube Forest)
- Midorigahama Park [K-2]
- Central Park [K-3] B





About Tahara

Tahara City is located at Atsumi Peninsula, the southern tip of Aichi Prefecture, surrounded by the scenic Mikawa Bay to the north and the Pacific Ocean to the south. Blessed with picturesque natural landscapes, Tahara is a vibrant town that features one of Japan's premier agricultural sectors, alongside thriving fisheries, commerce, and tourism industries.



Major Financial Indicators (General Accounts) (Ordinary Accounting Basis/Fiscal Year)

Standard Fiscal Scale (2024)	18.3Billion Yen
Percentage of Actual Expenses for Public Bonds (3-year average) (2024)	2.2%
Ratio of Current Income to Expenses (2024)	80.3%
Fiscal Strength Index (Single fiscal year basis)(2024)	0.98

* Amount of each item may not match the component ratio because the value is shown in the unit of ¥100 million.

2024 Settlement of Account Total Revenues	36.9Billion Yen
Local Taxes	19.8Billion Yen
Local Taxes (Component ratio of revenues)	53.7%
2024 Settlement of Accounts Total Expenditures	34.9Billion Yen
Investment Costs	6.0Billion Yen
Investment Costs (Component ratio of expenditures)	17.1%
Settlement of Accounts Current Amount of Municipal Bonds (2024)	22.3Billion Yen
Current Amount of Reserve Fund at the Settlement of Account in 2024 (Excluding fixed-amount management fund)	15.8Billion Yen

The mark of the city



The symbolic flower of the city

Colza flowers



The symbolic tree of the city

Camphor tree



Tahara Kurashi

Tahara City in everyday life

Festival / History



Floats expressing the culture of the castle town

The history of the Tahara Festival dates back to the Edo Period (1603-1868). It is said to have begun as a festival rite for Kumano Shrine. Intricate mechanical dolls mesmerize the audience.



Watanabe Kazan

Known as a great scholar, artist and statesman in the end of Edo period, Watanabe Kazan was one of the ministers of Tahara Han, a feudal domain.

Industry / Commerce



Tahara Rinkai Industrial Zone

The coastal industrial zone adjacent to Mikawa Bay has been home to Toyota Motor Corporation's Tahara Plant since the 1970s, attracting numerous automotive-related companies to the area. In addition to wind and solar power facilities, recent years have seen the establishment of several biomass power plants, promoting a harmonious industrial complex that fosters both manufacturing and renewable energy sectors.



Blessings of the earth and the sea



Blessed with a mild winter, Tahara City has the longest hours of sunlight, and the highest number of clear days in Japan. It is one of the major agricultural areas in Japan and vegetable production ranks as one of the top in Japan.



The city is also celebrated for its exquisite, attractive seafood, including clams, whitebait, and seaweed. Toyogawa River's mineral-rich water flows into Mikawa Bay to create the perfect concentration of salt for short-necked clams to grow.

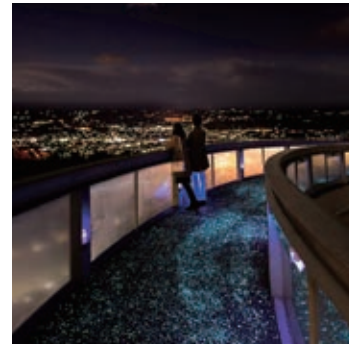
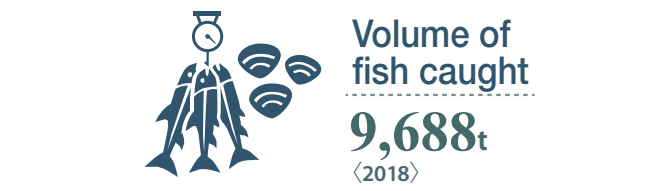
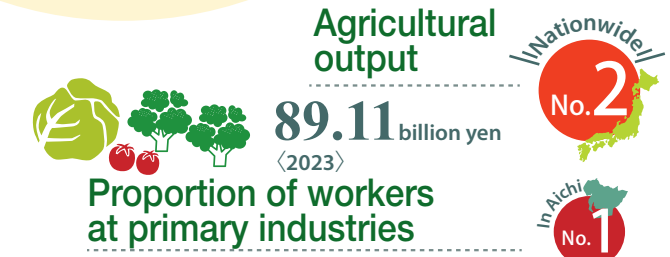
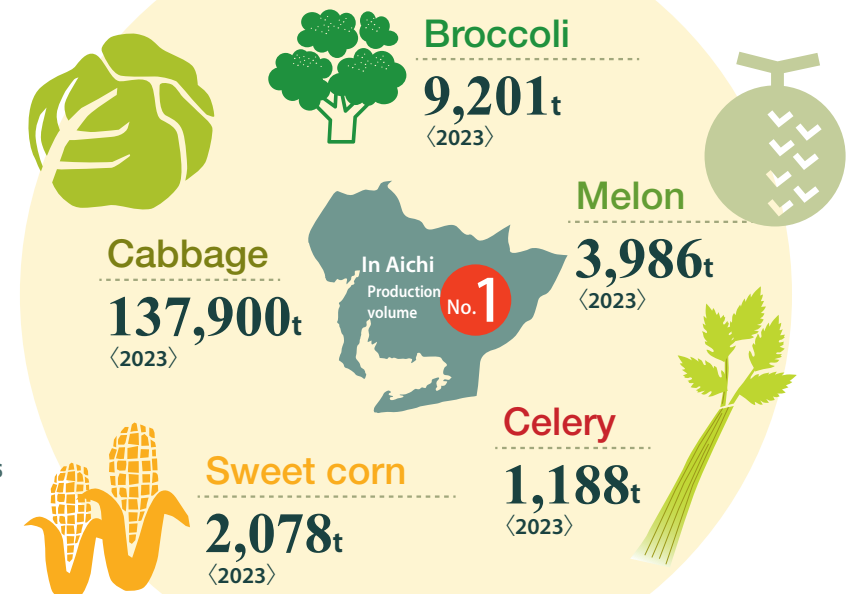
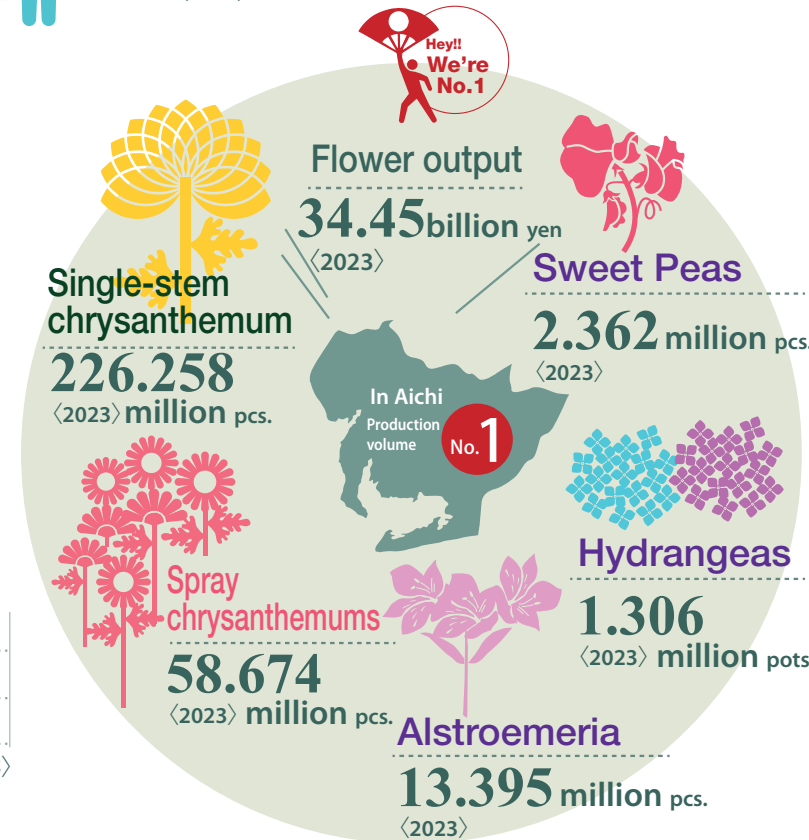
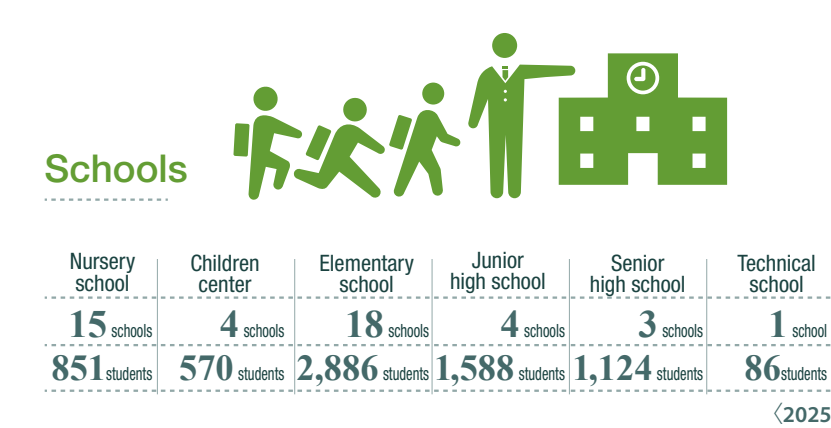
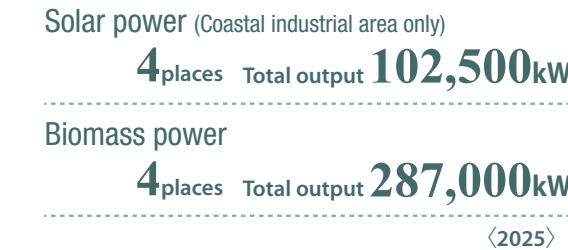
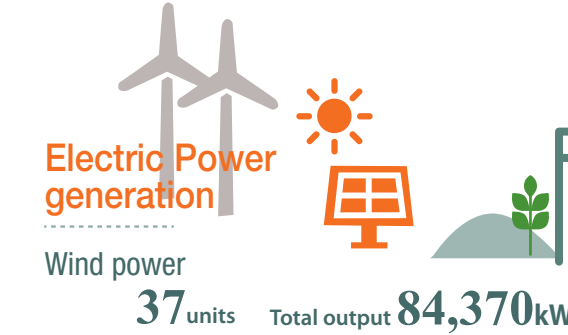
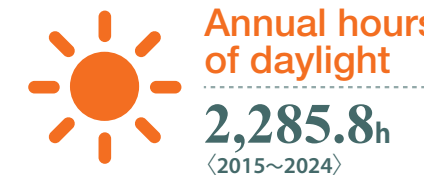
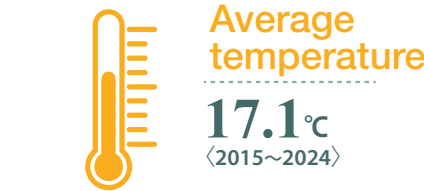


Stock farm product shipment ranks top in the prefecture. Beef, pork, chicken, eggs, milk, all items necessary for cooking are all produced in Tahara.



Tahara City, the number-one producer of flowers in Japan, is working to become a "world-class city of flowers" where not only in production but also everyone becomes familiar with and enjoys the "best flowers in Japan."

Tahara by the numbers



Mt. Zao

A panoramic view of the Pacific Ocean can be seen from the observatory at the summit of the mountain. Enjoy the lit up observatory and beautiful nightscape of the city.



Hiino Sekimon (Sunrise Stone Gate)

This is an oddly shaped rock with a cave in the middle eroded by the rough waves of the Pacific Ocean over many years. You can see the beautiful silhouette of the rock at sunrise.



Cape Irago Lighthouse

White-wall lighthouse at the tip of the Atsumi Peninsula. Enjoy the romantic sight of the sun setting into the ocean behind the lighthouse at dusk.