

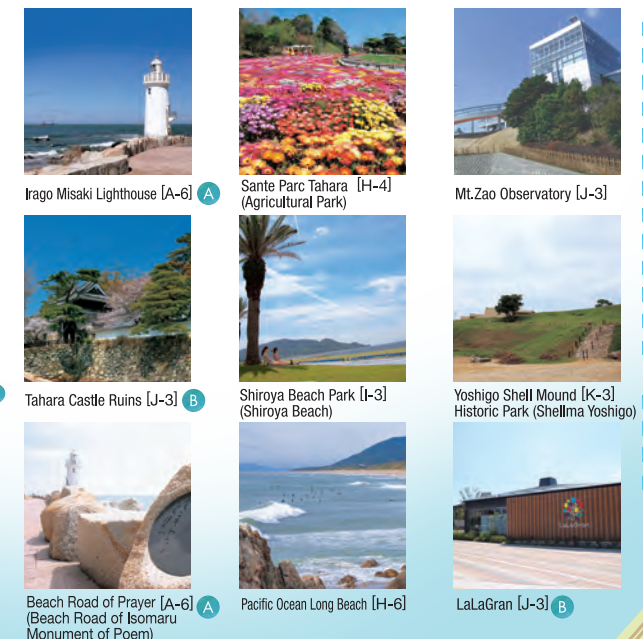
Administrative and welfare facilities



Cultural and historical facilities



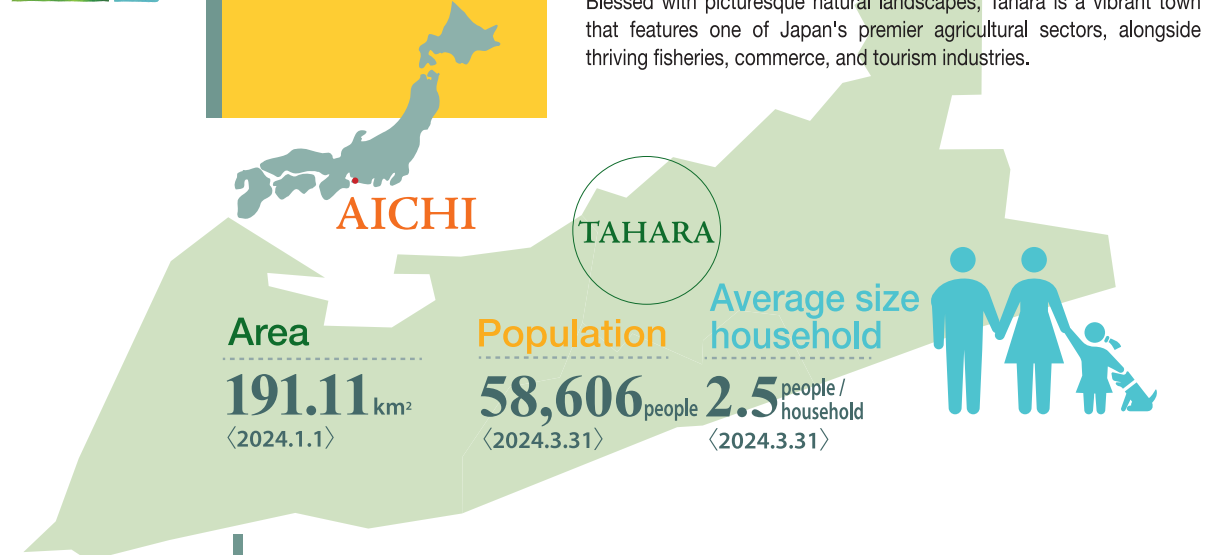
Sightseeing attractions, resorts and historical sites





About Tahara

Tahara City is located at Atsumi Peninsula, the southern tip of Aichi Prefecture, surrounded by the scenic Mikawa Bay to the north and the Pacific Ocean to the south. Blessed with picturesque natural landscapes, Tahara is a vibrant town that features one of Japan's premier agricultural sectors, alongside thriving fisheries, commerce, and tourism industries.



Major Financial Indicators (General Accounts)

Standard Fiscal Scale (2023) 19.0 billion Yen
Percentage of Actual Expenses for Public Bonds (3-year average) (2023) 2.3%
Ratio of Current Income to Expenses (2023) 99.0%
Fiscal Strength Index (Single fiscal year basis)(2023) 1.05

2023 Settlement of Account Total Revenues 37.3 billion Yen
Local Taxes 15.1 billion Yen
Local Taxes (Component ratio of revenues) 40.4%
2023 Settlement of Accounts Total Expenditures 36.2 billion Yen
Investment Costs 7.6 billion Yen
Investment Costs (Component ratio of expenditures) 21.1%
Settlement of Accounts Current Amount of Municipal Bonds (2023) 22.1 billion Yen
Current Amount of Reserve Fund at the Settlement of Account in 2023 (excluding fixed-amount management fund) 15.5 billion Yen

The mark of the city



The symbolic flower of the city



The symbolic tree of the city



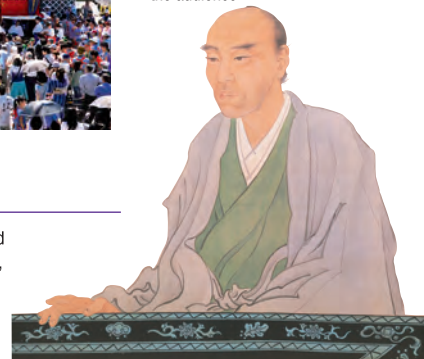
Tahara Kurashi Tahara City in everyday life

Festival / History



Floats expressing the culture of the castle town

The history of the Tahara Festival dates back to the Edo Period (1603-1868). It is said to have begun as a festival rite for Kumano Shrine. Intricate mechanical dolls mesmerize the audience.



Watanabe Kazan

Known as a great scholar, artist and statesman in the end of Edo period, Watanabe Kazan was one of the ministers of Tahara Han, a feudal domain.

Industry / Commerce



Tahara Rinkai Industrial Zone

The coastal industrial zone adjacent to Mikawa Bay has been home to Toyota Motor Corporation's Tahara Plant since the 1970s, attracting numerous automotive-related companies to the area. In addition to wind and solar power facilities, recent years have seen the establishment of several biomass power plants, promoting a harmonious industrial complex that fosters both manufacturing and renewable energy sectors.



Blessings of the earth and the sea



Blessed with a mild winter, Tahara City has the longest hours of sunlight, and the highest number of clear days in Japan. It is one of the major agricultural areas in Japan and vegetable production ranks as one of the top in Japan.



The city is also celebrated for its exquisite, attractive seafood, including clams, whitebait, and seaweed. Toyogawa River's mineral-rich water flows into Mikawa Bay to create the perfect concentration of salt for short-necked clams to grow.



Stock farm product shipment ranks top in the prefecture. Beef, pork, chicken, eggs, milk, all items necessary for cooking are all produced in Tahara.



Tahara City, the number-one producer of flowers in Japan, is working to become a "world-class city of flowers" where not only in production but also everyone becomes familiar with and enjoys the "best flowers in Japan."

Tahara by the numbers

Average temperature
16.9°C
(2014~2023)

Annual hours of daylight
2,283.8h
(2014~2023)

Electric Power generation
Wind power 38 units Total output 86,350kW
Solar power (Coastal industrial area only) 4 places Total output 152,900kW
(2023)

Schools

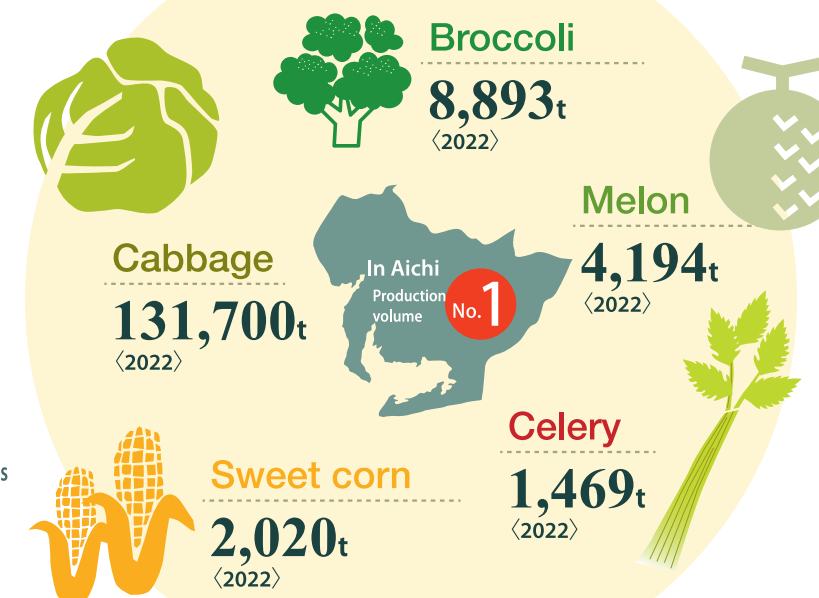
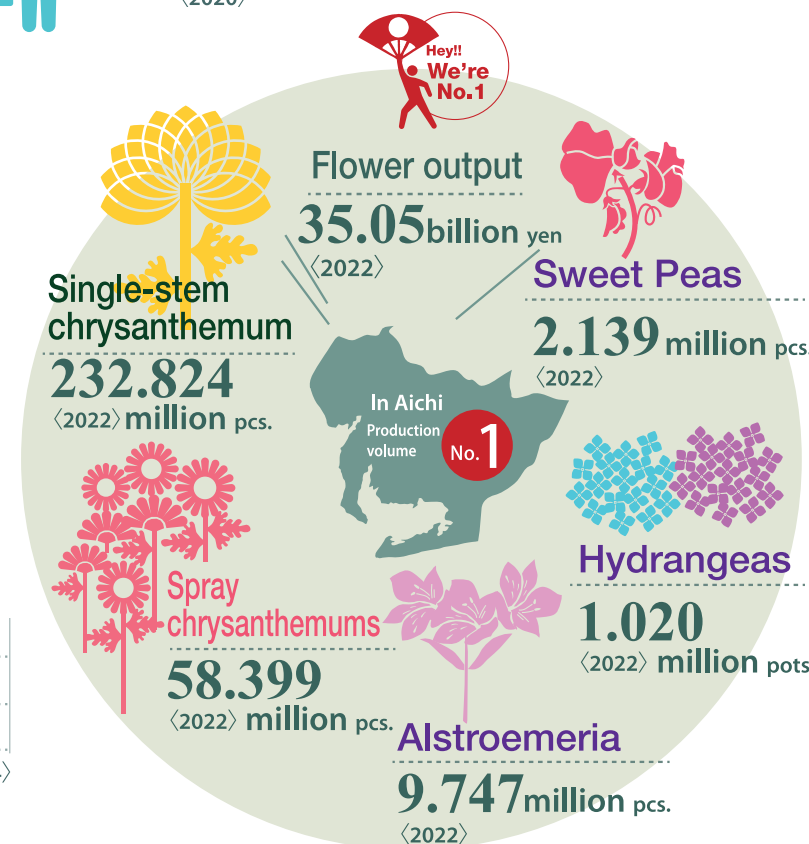
| Nursery school | Children center | Elementary school | Junior high school | Senior high school | Technical school |
|----------------|-----------------|-------------------|--------------------|--------------------|------------------|
| 15 schools | 4 schools | 18 schools | 4 schools | 3 schools | 1 school |
| 901 students | 554 students | 3,034 students | 1,581 students | 1,122 students | 84 students |

(2024)

Tourists
230 million tourists / year
(2023)

Community
20 Districts 106 Neighborhood associations
(2024)

Unemployment rate
2.2%
(2020)



Agricultural output
90.04 billion yen (2022)
No.2 (Nationwide)

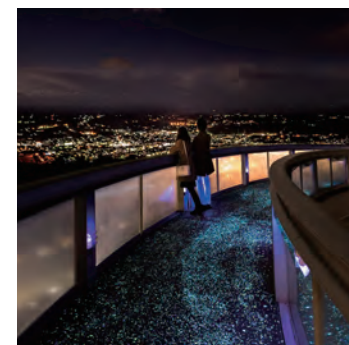
Proportion of workers at primary industries

29.9% (2020)
No. of farmers 3,535 (2020)
No.1 (In Aichi)
No.4 (In Aichi) Management body

Volume of fish caught
9,688t (2018)

Value of manufacturing shipments
1,791.1 billion yen (2021)
No.5 (In Aichi)

Scenery of Tahara



Mt. Zao

A panoramic view of the Pacific Ocean can be seen from the observatory at the summit of the mountain. Enjoy the lit up observatory and beautiful nightscape of the city.



Hiino Sekimon (Sunrise Stone Gate)

This is an oddly shaped rock with a cave in the middle eroded by the rough waves of the Pacific Ocean over many years. You can see the beautiful silhouette of the rock at sunrise.



Cape Irago Lighthouse

White-wall lighthouse at the tip of the Atsumi Peninsula. Enjoy the romantic sight of the sun setting into the ocean behind the lighthouse at dusk.