



English
〈英語〉

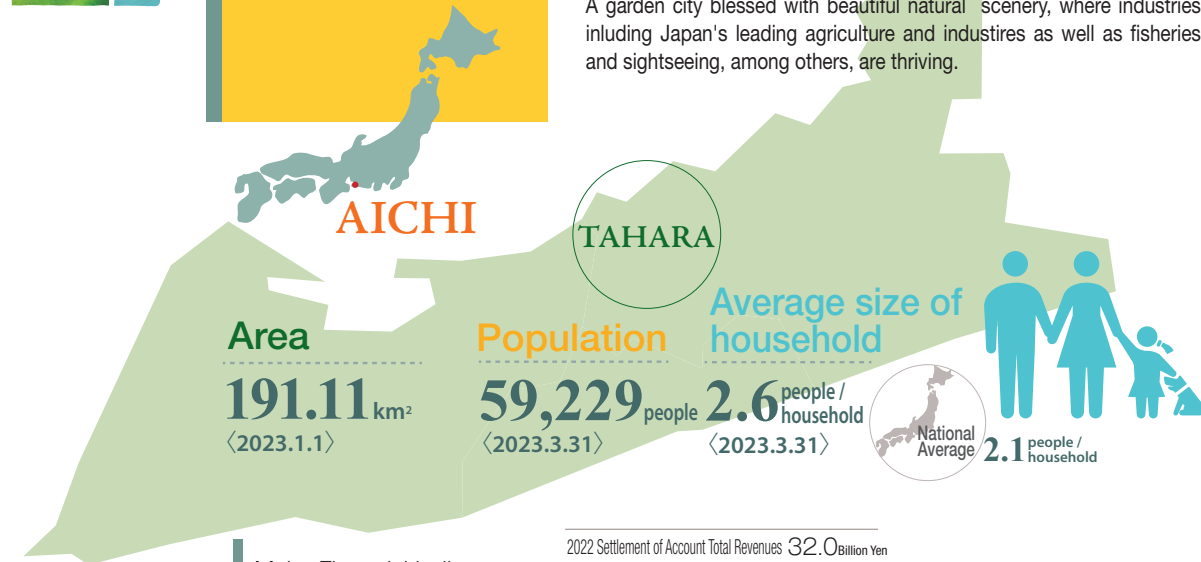
Tahara City Mini Handbook 2023





About Tahara

Tahara City is located at Atsumi Peninsula, the southern tip of Aichi Prefecture, surrounded by the scenic Mikawa Bay to the north and the Pacific Ocean to the south.
A garden city blessed with beautiful natural scenery, where industries including Japan's leading agriculture and industries as well as fisheries and sightseeing, among others, are thriving.



Major Financial Indicators (General Accounts) (Ordinary Accounting Basis/Fiscal Year)

Standard Fiscal Scale (2022)	17.2 Billion Yen
Percentage of Actual Expenses for Public Bonds (3-year average) (2022)	2.3%
Ratio of Current Income to Expenses (2022)	77.4%
Fiscal Strength Index (Single fiscal year basis)(2022)	0.83

* Amount of each item may not match the component ratio because the value is shown in the unit of ¥100 million.

2022 Settlement of Account Total Revenues 32.0 Billion Yen

Local Taxes 16.3 Billion Yen

Local Taxes (Component ratio of revenues) 50.8%

Local grant tax 2.3 Billion Yen

2022 Settlement of Accounts Total Expenditures 30.7 Billion Yen

Investment Costs 3.6 Billion Yen

Investment Costs (Component ratio of expenditures) 11.7%

Settlement of Accounts Current Amount of Municipal Bonds (2022)

Current Amount of Reserve Fund at the Settlement of Account in 2022

16.3 Billion Yen (excluding fixed-amount management fund)

The mark of the city



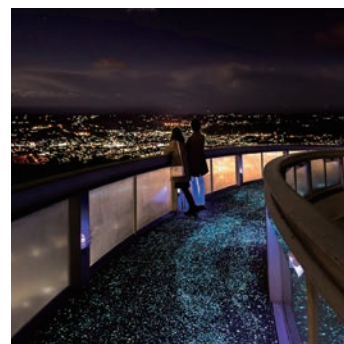
The symbolic flower of the city

Colza flowers



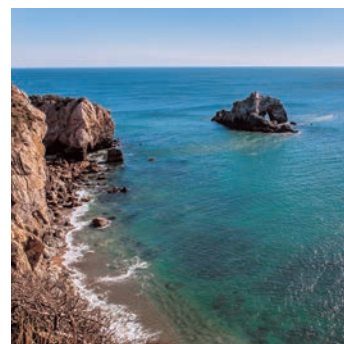
The symbolic tree of the city

Camphor tree



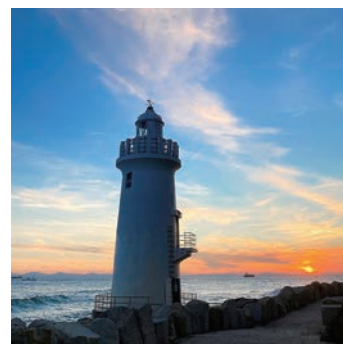
Mt. Zao

A panoramic view of the Pacific Ocean can be seen from the observatory at the summit of the mountain. Enjoy the lit up observatory and beautiful nightscape of the city.



Hiino Sekimon (Sunrise Stone Gate)

This is an oddly shaped rock with a cave in the middle eroded by the rough waves of the Pacific Ocean over many years. You can see the beautiful silhouette of the rock at sunrise.



Cape Irigo Lighthouse

White-wall lighthouse at the tip of the Atsumi Peninsula. Enjoy the romantic sight of the sun setting into the ocean behind the lighthouse at dusk.

Tahara Kurashi

Tahara City in everyday life

Festival / History



Floats expressing the culture of the castle town

The history of the Tahara Festival dates back to the Edo Period (1603-1868). It is said to have begun as a festival rite for Kumano Shrine. Intricate mechanical dolls mesmerize the audience.



Watanabe Kazan

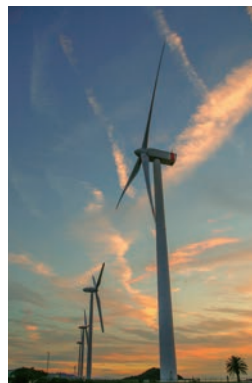
Known as a great scholar, artist and statesman in the end of Edo period, Watanabe Kazan was one of the ministers of Tahara Han, a feudal domain.

Industry / Commerce



Tahara Rinkai Industrial Zone

Many automotive enterprises started businesses in the Rinkai Industrial zone, facing Mikawa Bay, where Toyota Motor Corporation built its Tahara Plant in about 1980. This triggered the advance of many automobile-related companies establishing business sites in Tahara. This triggered a wave of automobile companies establishment in Tahara. Having constructed wind and solar power facilities in recent years, it has become an industrial park where manufacturing industries and renewable energy industries cohabitate.



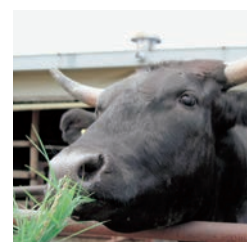
Blessings of the earth and the sea



Blessed with a mild winter, Tahara City has the longest hours of sunlight, and the highest number of clear days in Japan. It is one of the major agricultural areas in Japan and vegetable production ranks as one of the top in Japan.



The city also has abundant seafood such as short-necked clams, young sardines, laver and more. Toyogawa River's mineral-rich water flows into Mikawa Bay to create the perfect concentration of salt for short-necked clams to grow.



Stock farm product shipment ranks top in the prefecture. Beef, pork, chicken, eggs, milk, all items necessary for cooking are all produced in Tahara.



Tahara City, the number-one producer of flowers in Japan, is working to become a "world-class city of flowers" where not only in production but also everyone becomes familiar with and enjoys the "best flowers in Japan."

Tahara by the numbers

Average temperature
16.8°C
<2013~2022>

Annual hours of daylight
2,285.1h
<2013~2022>

Electric Power generation
Wind power 33 units Total output 64,850kw
Solar power (Coastal industrial area only) 4 places Total output 152,900kw
<2023>

Schools

Nursery school	Children center	Elementary school	Junior high school	Senior high school	Technical school
15 schools	4 schools	18 schools	4 schools	3 schools	1 schools
951 students	595 students	3,151 students	1,608 students	1,130 students	75 students

Tourists
220 million tourists / year
<2022>

Community
20 Districts 106 Neighborhood associations
<2023>

Unemployment rate
2.2%
<2020>

Flower output
33.1 billion yen
<2021>

Single-stem chrysanthemum
234.691 million pcs.
<2021>

Sweet Peas
1.884 million pcs.
<2021>

Hydrangeas
1.035 million pots
<2021>

Alstroemeria
9.747 million pcs.
<2021>

Spray chrysanthemums
56.538 million pcs.
<2021>

Broccoli
7,985t
<2021>

Melon
2,235t
<2021>

Celery
2,094t
<2021>

Sweet corn
1,890t
<2021>

Cabbage
140,670t
<2021>

Agricultural output
84.89 billion yen
<2021>

Proportion of workers at primary industries
28.8%
<2020>

Main management body (Agriculture/Individual)
2,025 Management body
<2020>

Volume of fish caught
9,688t
<2018>

Value of manufacturing shipments
1,371.5 billion yen
<2020>