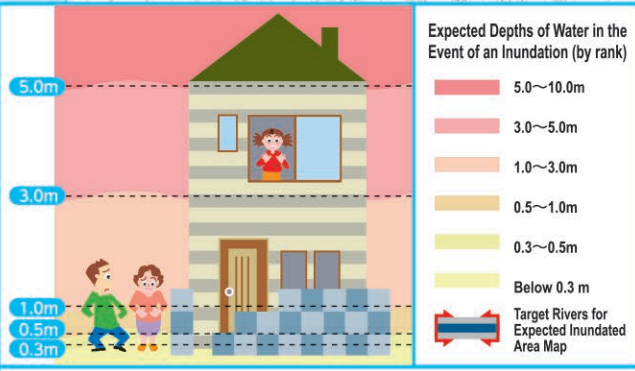


Tenpaku River Expected Inundated Area Map
(Expected Largest Scale)

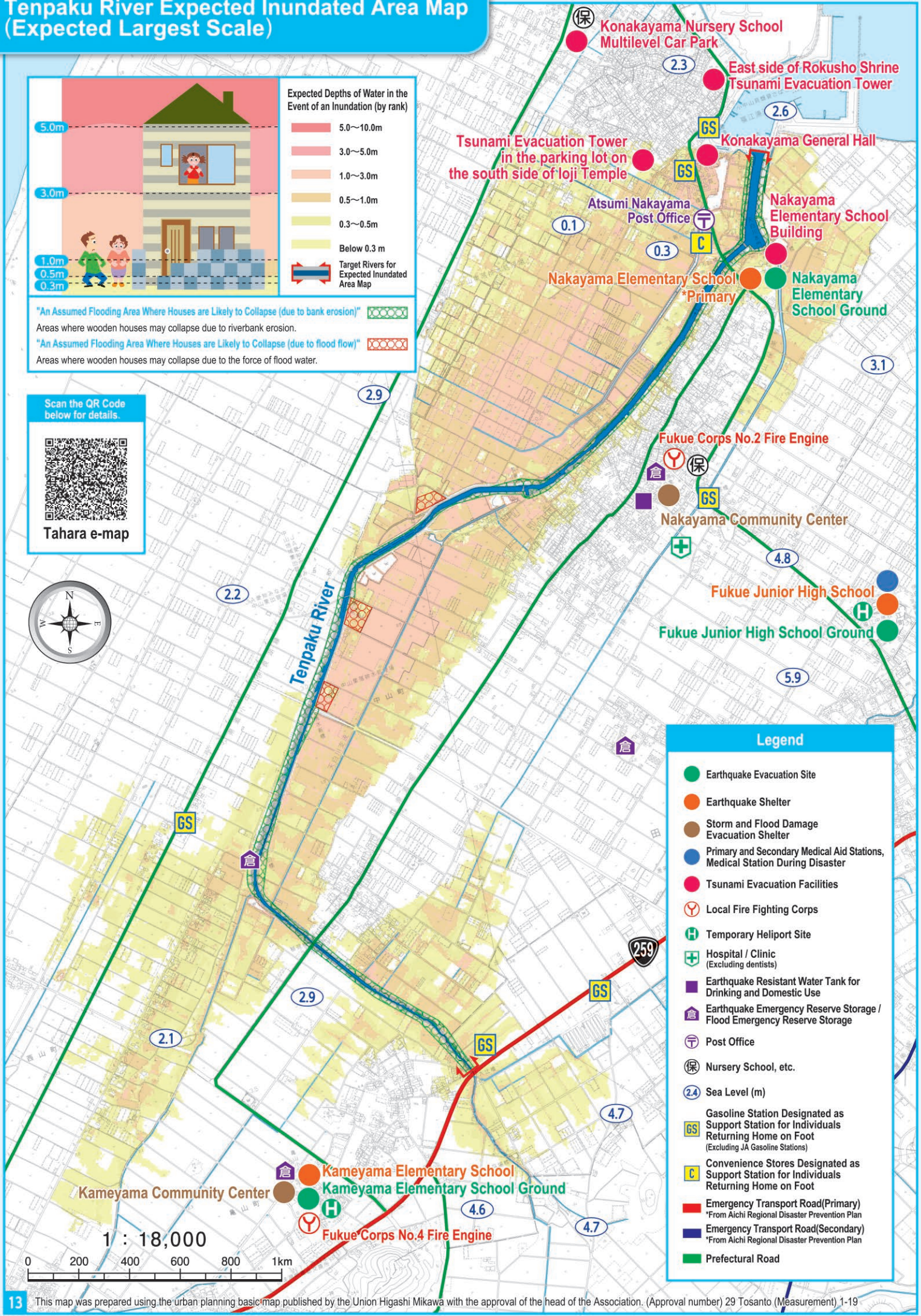


"An Assumed Flooding Area Where Houses are Likely to Collapse (due to bank erosion)"
Areas where wooden houses may collapse due to riverbank erosion.

"An Assumed Flooding Area Where Houses are Likely to Collapse (due to flood flow)"
Areas where wooden houses may collapse due to the force of flood water.

Scan the QR Code below for details.

Tahara e-map



- Legend**
- Earthquake Evacuation Site
 - Earthquake Shelter
 - Storm and Flood Damage Evacuation Shelter
 - Primary and Secondary Medical Aid Stations, Medical Station During Disaster
 - Tsunami Evacuation Facilities
 - Local Fire Fighting Corps
 - Temporary Heliport Site
 - Hospital / Clinic (Excluding dentists)
 - Earthquake Resistant Water Tank for Drinking and Domestic Use
 - Earthquake Emergency Reserve Storage / Flood Emergency Reserve Storage
 - Post Office
 - Nursery School, etc.
 - Sea Level (m)
 - Gasoline Station Designated as Support Station for Individuals Returning Home on Foot (Excluding JA Gasoline Stations)
 - Convenience Stores Designated as Support Station for Individuals Returning Home on Foot
 - Emergency Transport Road(Primary)
*From Aichi Regional Disaster Prevention Plan
 - Emergency Transport Road(Secondary)
*From Aichi Regional Disaster Prevention Plan
 - Prefectural Road

